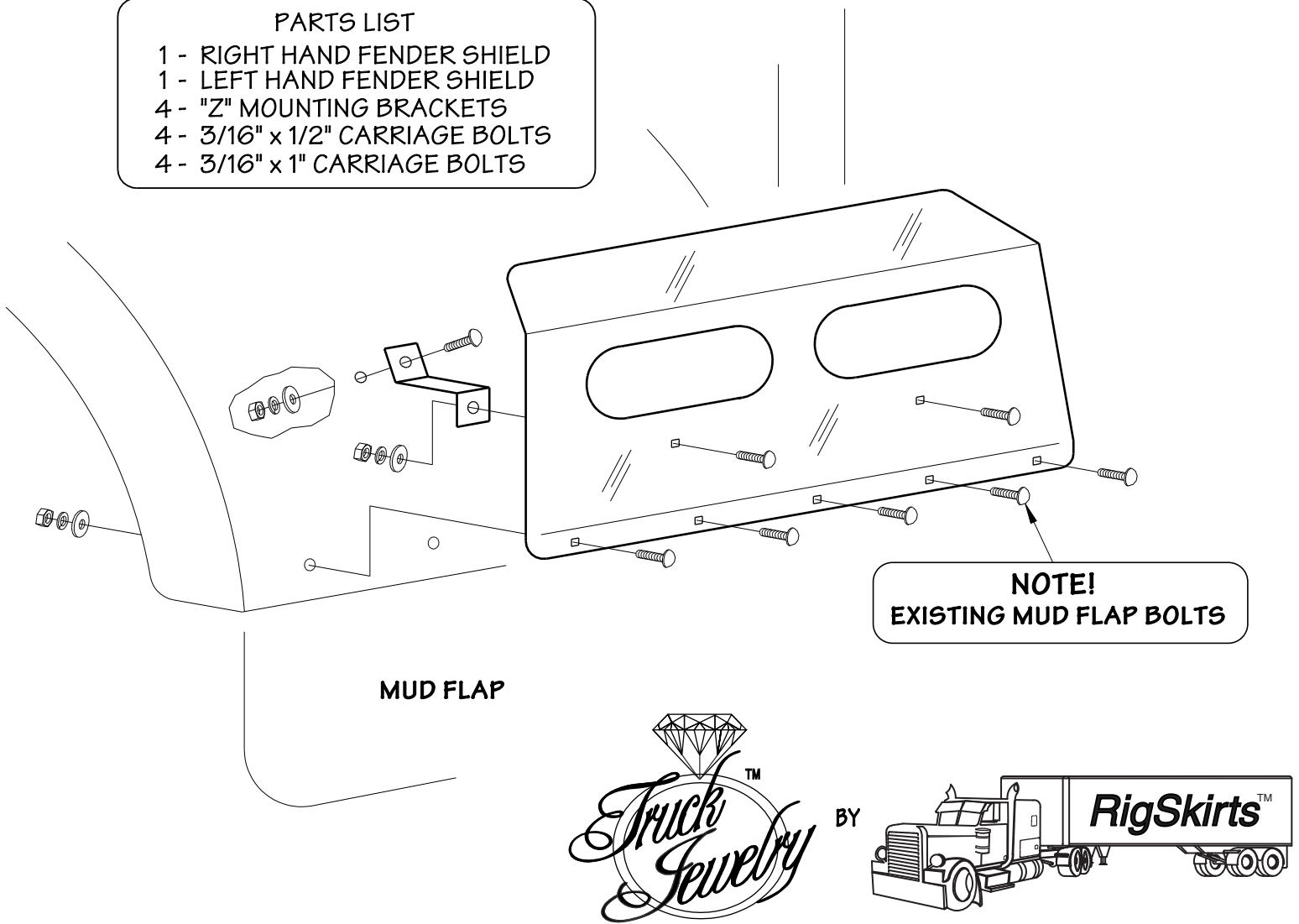


FREIGHTLINER "CLASSIC" FENDER SHIELDS

P/N 18151, 18153 & 18154

PARTS LIST

- 1 - RIGHT HAND FENDER SHIELD
- 1 - LEFT HAND FENDER SHIELD
- 4 - "Z" MOUNTING BRACKETS
- 4 - 3/16" x 1/2" CARRIAGE BOLTS
- 4 - 3/16" x 1" CARRIAGE BOLTS



INSTRUCTIONS

1. AFTER UNPACKING THE CARTON, CAREFULLY DETERMINE THAT YOU HAVE ALL OF THE PARTS AS SHOWN IN THE ILLUSTRATION AND PARTS LIST.
2. REMOVE MUD FLAPS FROM THE FRONT OF THE FENDERS. KEEP ALL OF THESE PARTS AS THEY WILL BE USED DURING INSTALLATION OF THE FENDER SHIELDS.
3. ATTACH THE BRACKETS TO THE REAR OF THE FENDER SHIELDS USING THE FOUR SHORT BOLTS PROVIDED AND TIGHTEN.
4. TEMPORARILY MOUNT THE FENDER SHIELD AT THE BOTTOM WITH ONE BOLT IN EACH END AND CAREFULLY MARK THE HOLES TO BE DRILLED IN THE FENDER.
5. REMOVE THE FENDER SHIELDS AND DRILL THE 1/4" HOLES IN THE FENDER.
6. REMOUNT THE FENDER SHIELDS ALONG WITH THE MUD FLAPS UTILIZING THE BOLTS YOU PREVIOUSLY REMOVED.
7. INSTALL THE BOLTS BETWEEN THE FENDER AND THE BRACKETS AND TIGHTEN ALL BOLTS.
8. IF YOU HAVE PURCHASED A MODEL WITH LIGHTS, YOU ARE NOW READY TO INSTALL THE LIGHTS AND COMPLETE THE WIRING.