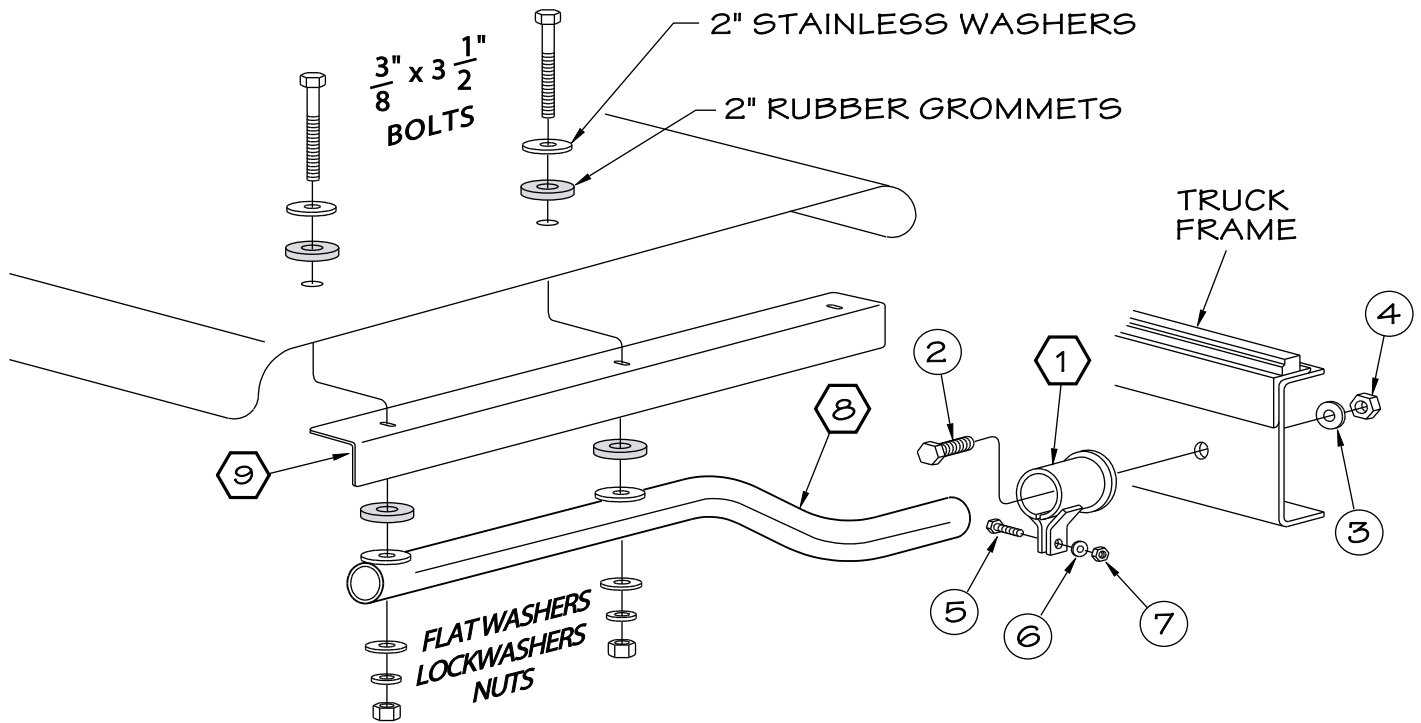
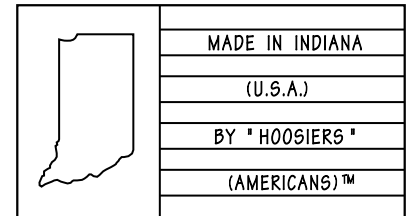


TUBE STYLE REAR MOUNT

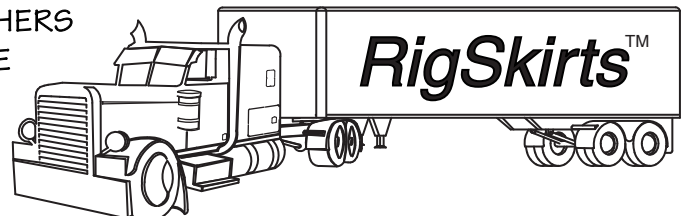


INSTRUCTIONS

1. INSTALL BOLTS #5, 6 & 7 IN MOUNT SOCKET (PART #1).
2. SLIDE TUBE MOUNT (PART #8) INTO THE MOUNT SOCKET AND TIGHTEN SLIGHTLY MORE THAN "FINGERTIGHT".
3. PLACE THE FENDER AND THE MOUNT TUBE ASSEMBLY IN THE PROPER POSITION USING TWO OF THE RUBBER GROMMETS AS SPACERS AND MARK THE LOCATION OF THE HOLE TO BE DRILLED INTO THE TRUCK FRAME.
4. REMOVE THE TUBE MOUNT ASSEMBLY, DRILL A HOLE INTO THE TRUCK FRAME FOR THE 5/8" BOLT AND THEN BOLT THE SOCKET (#1) ONTO THE FRAME. SLIDE THE TUBE MOUNT (#8) BACK INTO THE SOCKET.
5. PLACE THE FENDER BACK INTO POSITION AND MARK THE HOLES TO BE DRILLED IN THE FENDER. THIS CAN BEST BE ACCOMPLISHED BY PLACING A SCRATCH AWL OR LONG NAIL, UP THROUGH THE HOLES IN THE BOTTOM OF THE TUBE MOUNT.
6. DRILL THE HOLES IN THE FENDER, REPOSITION THE FENDER BACK OVER THE TUBE MOUNT AND ADD THE ANGLE STIFFNER (PART #9). TAKE CARE TO INSTALL THE BOLTS, WASHERS AND RUBBER GROMMETS EXACTLY AS SHOWN IN THE ILLUSTRATION.



BY



11/6/2007

408930INS

COPYRIGHT © 2007
RigSkirts LLC.